

# Virtual Gateway, Real Challenge

Presentation by Kerri Sidorow  
Web 2.0, Internet and other stuff,  
State Library Victoria  
23<sup>rd</sup> July, 2007



[wynlearn.net.au](http://wynlearn.net.au)  
wyndham's gateway to lifelong learning

- The thinking behind it
- The process of developing it
- How it works
- Outcomes to date
- The challenges ahead



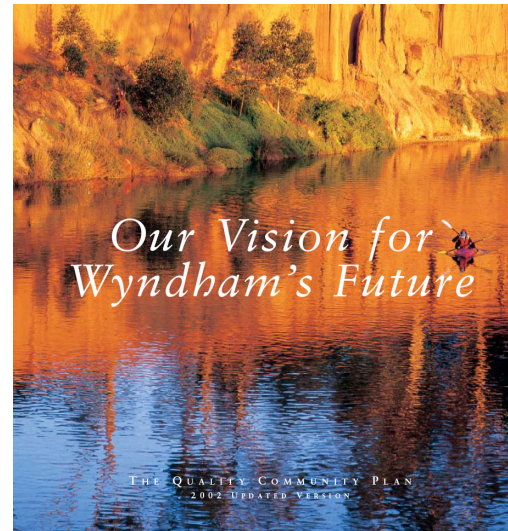
# Objectives

- To provide a single virtual focal point for libraries and learning
- To increase knowledge of and accessibility to learning opportunities
- To increase participation in learning opportunities
- To facilitate connectedness amongst libraries, learning providers and learners
- To invite community dialogue about learning in Wyndham

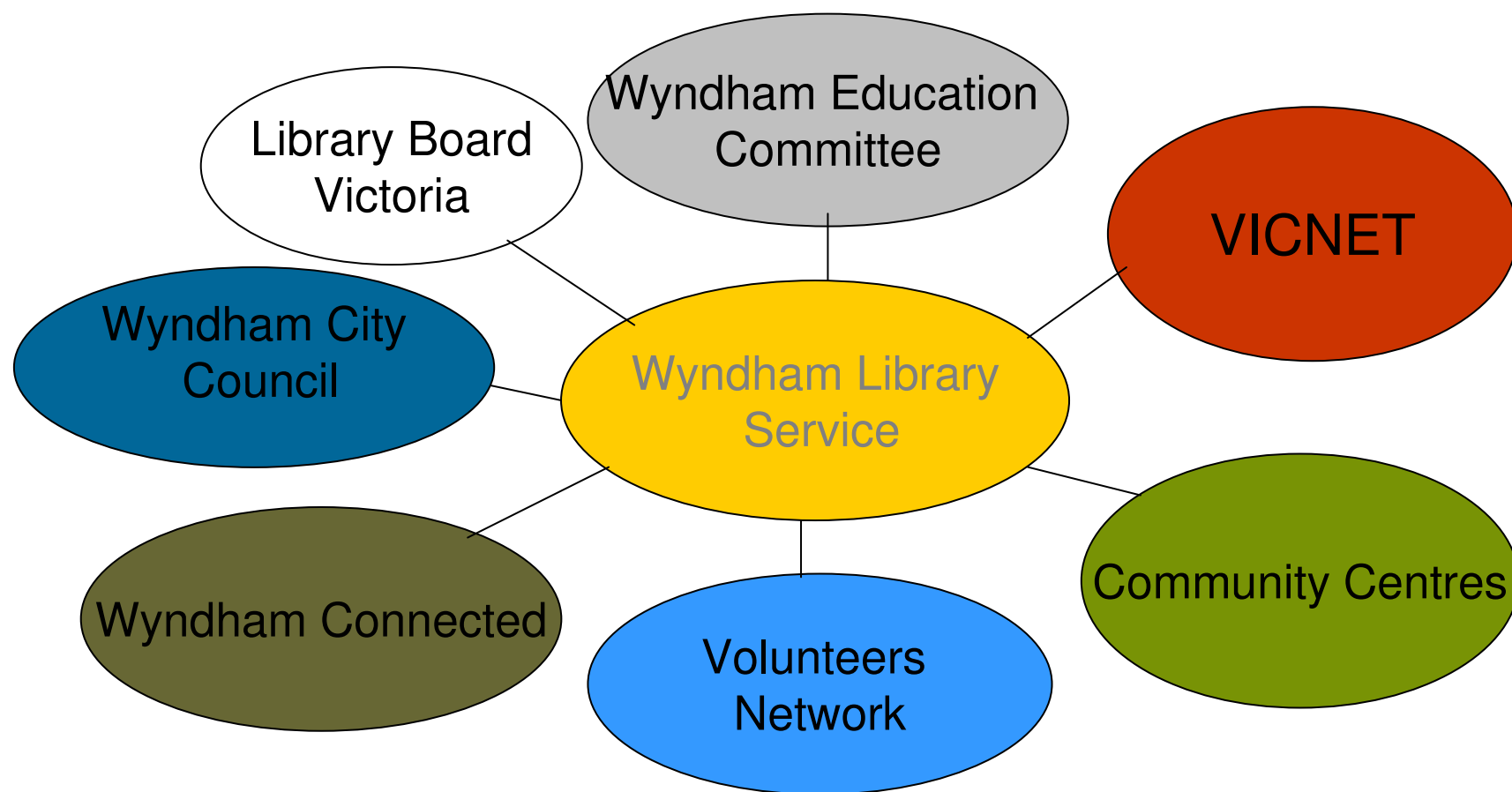


# Strategic framework

- Wyndham Quality Community Plan
- Wyndham Community Learning Strategy
- Wyndham Library Service Strategic Plan



# Partners



[wynlearn.net.au](http://wynlearn.net.au)

wyndham's gateway to lifelong learning

# Benchmarking

- EDNA ([www.edna.edu.au](http://www.edna.edu.au)), Australia's free online network for educators.
- Short Courses Victoria (<http://www.shortcourses.vic.gov.au>)
- Hotcourses (United Kingdom) (<http://www.hotcourses.com>).



# Navigating wynlearn

**Find learning** helps you to search courses and learning activities in the Wyndham area.

**Engage in learning** allows wynlearn members to access a wide range of information about adult education and allows them to exchange ideas and post messages.

**My wynlearn** is where residents register to access the complete range of services.



# Incorporating Web 2.0

## Personalisation

- Saved searches
- Tailored RSS news content (created using Yahoo! Pipes)

## Social software elements

- Forum to raise new learning opportunities and discuss existing learning locally

## Content Syndication

- Alerts when new learning event content matches saved search criteria





# Future Challenges

- Expand the number of learning opportunities listed
- Work with learning providers to develop clear protocols and continuous content entry
- Encourage community participation in the online forum
- Market the portal in new and innovative ways
- Develop functionality in line with community needs and expectations



*There's nothing constant in the world,  
All ebb and flow, and every shape that's born  
Bears in its womb **the seeds of change.**  
Ovid (43 B.C.–A.D. 17/18)*

